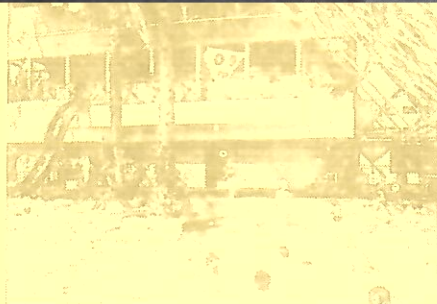


gement
Association



There are now nearly 1,000 members engaged in the many facets of recreation management.



has been one of the most important developments of the Association. It has been instituted throughout the U.K. The importance of the 'regional' award is now presented annually by George Torkildsen to the 'Region of the Year'.



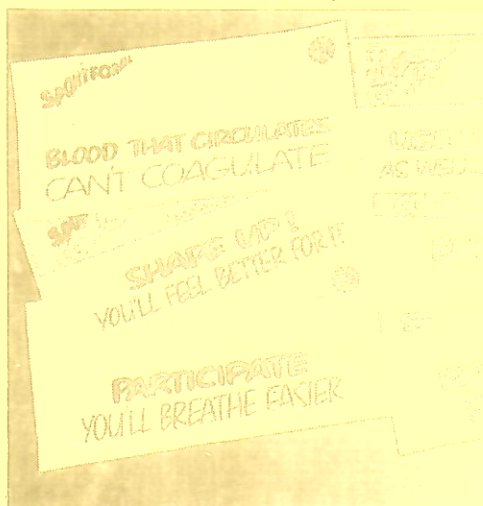
One of the most important advantages of membership has been the opportunity to visit other facilities. Listening to specialist speakers, hearing the experiences of other managers have all helped improve the quality of recreation management.



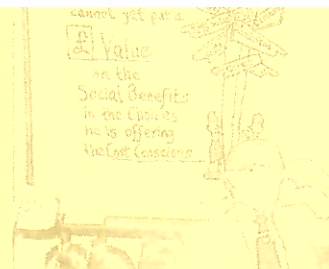
The 'trailblazers' pictured here at Port Talbot in 1955. From left to right: Griff Jones, Barry Stowe, Bob Crawley, John Alexander, Jack Fidgett, ? (Sorry), Stan Peter Tonks, Geoff Bott, Mayor of Port Talbot. Where



1976 was a landmark in the Association's history with the appointment of an Administrator to co-ordinate the Association's management & development. John Turner came with the marked expertise which would help the Association expand. John is seen here with founder member Geoff Gearing.



Association members play a major part in not only participating for the benefit of the community. They have received widespread support



There has been no greater encouragement to the development of the Association than that given by Ted Blake.



The growth of regional branches over the last decade. Ten regions are now contributing to the Association's development.



Throughout the last 10 years one of the most important advantages of membership has been the opportunity to meet within the Association and share the experiences of other managers and

10 YEARS ON

ation Service. The Association at this stage became much wider membership, embracing many managers in the new leisure and recreation departments.

ntly membership stands at nearly 1,000, comprising Directors and by Directors of Leisure Departments, Recreation Officers and , Sports and Leisure Centre Management.

celebrate what has been a swift and remarkable development the Association is planning to mark the completion of its first decade in a er of ways. You will read elsewhere of the special arrangements made for this year's AGM in London and the Tenth Anniversary r in Blackpool. A special tenth anniversary annual report is also prepared.

News intends to reflect on the ten years throughout its 1980 ns—bringing you a hint of what has been seen and said (serious ot so serious) in the cause of recreation management and ARM.

, quotes, serious comments, old photographs (libellous and rassing), funny moments, disasters—they are all fair game.

ERY MEMBER COMES UP WITH ONE WE SHALL HAVE SOME NDID FEATURES. It is estimated that six lines can be written on a ard in 25 seconds! We look forward to hearing from you by 11th



A warm, friendly atmosphere has always surrounded the Association's events. Included in this picture of the National Executive taken in 1977 are guests of the Association and Doreen Pinder. Doreen was the Association's part-time secretary from 1972 to 1978. It was Doreen's sterling work which enabled the Association to reach its current healthy position.



up of the Association's first members. Back row, Tomasson, Doug Sewell, Chris Field, Ray Cooper, Bryn Jones, Ivor Jones. Front row: Brian Barnes, James, Graham Jenkins, Dennis Woodman. now?



A host of regional and national seminars have been held through the decade. They provide the opportunity to focus attention on current management topics and exchange ideas.



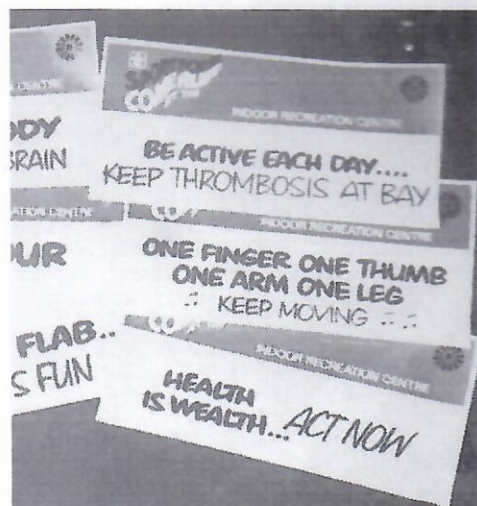
ARM has over the decade welcomed numerous local authority members to its major events. ARM considers this relationship extremely beneficial for recreation management.



ARM has played a major part in the adjudication of the Sports Council's Sports Centre Management of the Year Award since its inception in 1976.



The Helmsman national Squash Tournament for Association members has been held annually since 1978.



facilities which are in demand but in encouraging council's Sport for All campaign in particular has Association members.



The Association has broadened its horizons since those early sports centre days. Association members are now actively involved in the management of all aspects of local authority recreation services. (Here you see town centre entertainment organised by Watford). A large number of members who came into sports centre management during the first five years of the decade now hold senior and Chief Officer posts in Leisure and Recreation Departments.